

DONKEY-ES - Specifications

Elevated Seating

D

C

B

A

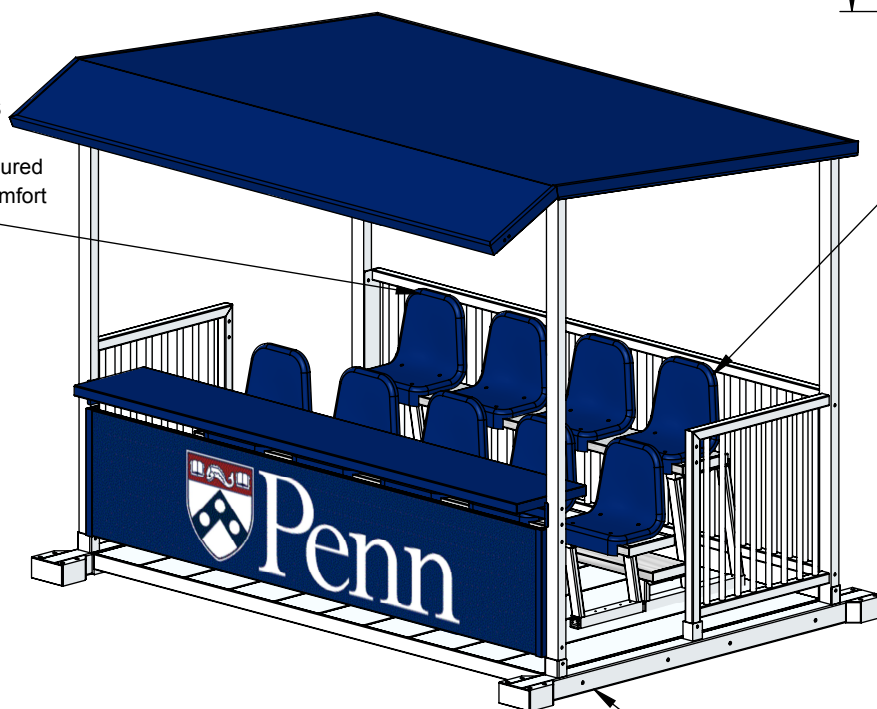
D

C

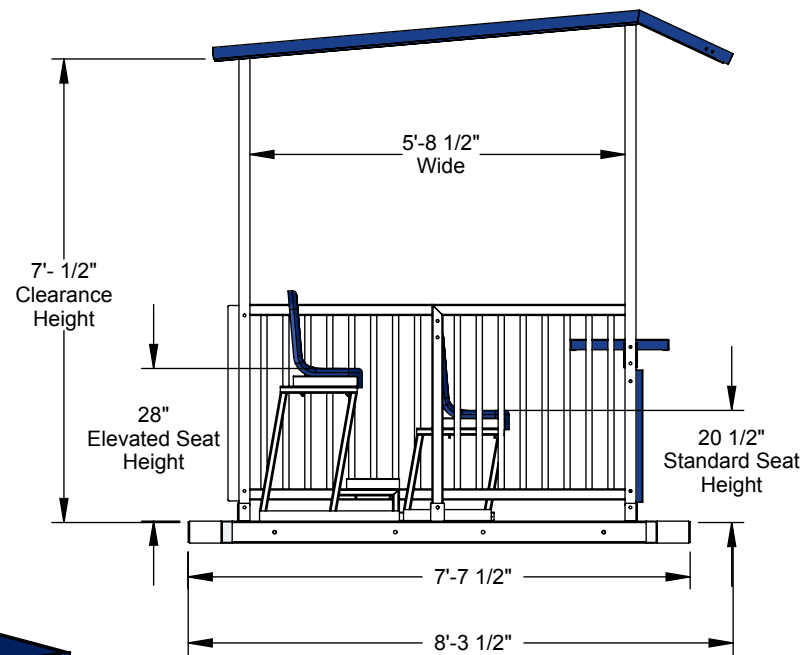
B

A

Model No. DONKEY-ES
Elevated seating adds a
second row, while contoured
seats offer additional comfort
(Choice of Color)



Elevated Seating requires a
wider base platform



Elevated Rear seats (4 People)

Model # DONKEY-ES, Elevated Seating, 11" wide
aluminum plank seating with a second row of seating
raised 7 1/2" seats 6 people each; contoured seating
for additional comfort also available with customers
specified color choice



Aluminum Athletic Equipment
1000 Enterprise Drive, Royersford, PA 19468
Toll Free: (800) 523-5471 Fax: (610) 825-2378
www.AAEsports.com

DESCRIPTION:

DONKEY-ES - Specifications

NOTE:

Elevated Seating

MODEL:

DONKEY-ES

CATEGORY:

CUSTOMER

DATE:

11/30/2017

DWN. BY:

CED

CAD FILE:

DONKEY-ES

DWG. NO.

DONKEY-ES-C-001